

# Pollinators and Visitors of Aroid Inflorescences

Marc Gibernau

Laboratoire d'Évolution & Diversité Biologique

Université de Toulouse III

118 Route de Narbonne, Bât. IV R 3—B 2

31062 Toulouse Cedex 4

France

e-mail: gibernau@cict.fr

## ABSTRACT

Data on aroid pollinators was first summarized by Grayum (1984) who documented 35 genera and about 90 species. A second summary was published in 1997 in *The Genera of Araceae* (Mayo *et al.*, 1997) with 38 genera and less than 100 species listed including data from Grayum (1986, 1990). This paper brings the reference list up to date since 1997, documenting the pollinators of 49 genera and about 125 species. These numbers are still very low in comparison with the diversity of the Araceae family which contains 105 genera and about 3,300 species. Some questions on aroid pollination are developed in the discussion.

## KEY WORDS

Araceae, Coleoptera, Diptera, floral morphology, Hymenoptera, pollination.

## INTRODUCTION

Data on aroid pollinators was first summarised by Grayum (1984) who documented 35 genera and about 90 species. A second summary was published in 1997 in *The Genera of Araceae* (Mayo *et al.*, 1997) with 38 genera and less than 100 species listed including additional data from Grayum (1986, 1990). In 13 years, the pollinators (and sometimes the pollination biology) of only three new genera and about 10 species were documented. In this paper, I summarise the data on Araceae pollinators by completing the references since 1997 and citing several omitted references earlier than 1997. The purpose of this work is not to give an exhaustive re-

view of this subject, as Thomas Croat (2000) did in his history and current status of systematic research with Araceae, but to give, in the first place, a statement of the subject and to develop some remarks on aroid pollination.

## RESULTS

Summarizing data from Grayum (1984, 1990) and Mayo *et al.* (1997), and including omitted and new publications, the pollinators of 49 genera and about 125 species are documented in Table 1. These numbers are still very low in comparison with the diversity of the Araceae family which contains 105 genera and about 3,300 species (Mayo *et al.*, 1997). Thus, pollinators are cited for only 47% of the genera.

The references not previously published document pollinators from 25 known genera and from 8 new genera namely: *Aglaonema*, *Biarum*, *Eminium*, *Furtadoa*, *Pinnellia*, *Rhaphidophora*, *Sauromatum* and *Theriothorum*.

It is important to note that the list given in Table 1 does not distinguish between pollinators and visitors. Although aroid inflorescences can be visited by several types of insects, only a few—and sometimes only one—are the real pollinators for each species (Bogner, 1981; Shaw & Cantrell, 1983; Valerio, 1984; Pellmyr & Patt, 1986; Young, 1986; Patt *et al.*, 1995). Second, when there are several species of insects, efficiency in achieving pollination can differ between pollinators, some species carrying few or no pollen grains and acting as "simple" visitors (Young, 1988a).

**Table 1. Adapted from Mayo *et al.* (1997), references cited after Grayum (1984, 1986, 1990) with new and update references on aroid pollinators/visitors.**

Subfamily/tribe	Genera	Bees	Beetles	Flies	Others	References
Orontioideae	<i>Lysichiton</i>		Staphylinidae	Anthomyiidae Lauxaniidae Various flies		Hesse, 1980 Pellmyr & Patt, 1986 Willson & Hennon, 1997 Tanaka, 1998
Orontioideae	<i>Symplocarpus</i>	“hive bees”	Staphylinidae	Drosophilidae Psychodidae Chloropidae Cerato- pogonidae Chironomidae Simuliidae Cecidomyiidae Muscidae	Wind (self-pollination) Various invertebrates	Trelease, 1879 Moodie, 1976 Grimaldi & Jaenike, 1983 Camazine & Niklas, 1984 Uemera <i>et al.</i> , 1993
Pothoideae/ Anthurieae	<i>Anthurium</i>	Euglossine	Curculionidae Staphylinidae	Cecidomyiidae Drosophilidae	Self-pollination (wind?) Hummingbird	William & Dressler, 1976 Madison, 1979 Croat, 1980 Valerio & Villalobos, 1980 Beath, 1998 Kraemer & Schmitt, 1999 Schwerdtfeger <i>et al.</i> , 2002 Madison, 1977 Ramirez & Gomez, 1978 Ramirez, 1980 Grayum, unpubl. data Beath, 1993
Monsteroideae/ Monstereae	<i>Monstera</i>	Trigone	Scarabaeidae			
Monsteroideae/ Monstereae	<i>Rhaphidophora</i>		Scarabaeidae			
Monsteroideae/ Monstereae	<i>Rhodospatha</i>		“beetles”			Schatz & Grayum, unpubl. data

<b>Table 1. Continued.</b>						
<b>Subfamily/tribe</b>	<b>Genera</b>	<b>Bees</b>	<b>Beetles</b>	<b>Flies</b>	<b>Others</b>	<b>References</b>
Monsteroideae/ Spathiphyllae	<i>Spathiphyllum</i>	Euglossine Trigone Halictidae	Chrysomelidae	Drosophilidae Tephritidae		William & Dressler, 1976 Montalvo & Ackerman, 1986 Lewis <i>et al.</i> , 1988 Vogel, 1990 Chuah <i>et al.</i> , 1996 Beath, 1998 Knecht, 1983
Lasioideae	<i>Cyrtosperma</i>		Nitidulidae			Grayum, pers. observ.
Lasioideae	<i>Dracontium</i>			"myiophilous"		J. Boos, pers. observ.
Lasioideae	<i>Urospatha</i>		Nitidulidae			Krause, 1908 Knuth, 1909 Madison, 1979 Bawa & Beach, 1981 Valerio, 1984 Young, 1986, 1988a, 1988 b, 1990 Seres & Ramirez, 1995 Beath, 1998, 1999 Grayum, pers. observ.
Calloideae	<i>Calla</i>			"small flies"		Hubbard, 1895 Schrottky, 1910 Madison, 1979 Gottsberger & Amaral, 1984 Ramirez, 1989 Gottsberger & Silberbauer- Gottsberger, 1991 Seres & Ramirez, 1995 Grayum, 1996 Croft, 1997
Aroideae/ Dieffenbachieae	<i>Dieffenbachia</i>		Scarabaeidae			
Aroideae/ Philodendreae	<i>Philodendron</i>		Scarabaeidae			

Table 1. Continued.

Subfamily/tribe	Genera	Bees	Beetles	Flies	Others	References
						Beath, 1998 Gibernau <i>et al.</i> , 1999, 2000 Gibernau & Barabé, 2002 Grayum, pers. observ. Mori & Okada, 2001
Aroideae/ Homalomeneae	<i>Furtadoa</i>			Drosophilidae		
Aroideae/ Homalomeneae	<i>Homalomena</i>		Scarabaeidae (neotropics) Chrysomelidae In Malaya	Drosophilidae (Asia)		Yafuso & Okada, 1990 Momose <i>et al.</i> , 1998 Sultana <i>et al.</i> , 2002 Grayum, pers. observ. Schatz, pers. observ. (Malaya) Madison, 1979 Ramirez & Brito, 1992 Gibernau <i>et al.</i> , 2003 Grayum & Schatz, unpubl. data Knecht, 1983
Aroideae/ Montrichardieae	<i>Montrichardia</i>	"bees"	Scarabaeidae			
Aroideae/ Anubieae	<i>Anubias</i>		Nitidulidae Scarabaeidae			
Aroideae/ Schismatoglot- tidae	<i>Aridarum</i>		Nitidulidae			J. Bogner, pers. observ.
Aroideae/ Schismatoglot- tidae	<i>Piptospatha</i>		Staphylinidae			J. Bogner, pers. observ.
Aroideae/ Schismatoglot- tidae	<i>Schismatoglottis</i>			Drosophilidae		J. Bogner, pers. observ.
Aroideae/ Caladieae	<i>Caladium</i>		Scarabaeidae			Madison, 1981 Beach, 1982 Pellmyr, 1985 Pellmyr, pers. comm.

Table 1. Continued.

Subfamily/tribe	Genera	Bees	Beetles	Flies	Others	References
Aroideae/ Caladieae	<i>Chlorospatha</i>		Staphylinidae			Madison, 1981
Aroideae/ Caladieae	<i>Syngonium</i>		Scarabaeidae			Madison, 1979 Croat, 1981 Beath, 1998 Grayum, pers. observ.
Aroideae/ Caladieae	<i>Xanthosoma</i>	Euglossine	Scarabaeidae (Nitidulidae)	Drosophilidae		Schrottky, 1910 Madison, 1979 Valerio, 1988 Tsacas & Chassagnard, 1992 Seres & Ramirez, 1995 Moron, 1997 Beath, 1998 Goldwasser, 2000 Garcia-Robledo <i>et al.</i> , 2003, unpubl. data Grayum, pers. observ.
Aroideae/ Thomsonieae	<i>Amorphophal- lus</i>	Trigone	Asilidae Cetoniidae Nitidulidae Scarabaeidae Silphidae Staphylinidae Hybosoridae Histeridae	Calliphoridae Platystomatidae		Knuth, 1909 Backer, 1913 van der Pijl, 1937 Bogner, 1976 Mayo <i>et al.</i> , 1982 Sivadasan & Sabu, 1989 Beath, 1993, 1996, 1998 Weryszko-Chmielewska & Stpiczynska, 1995 Kite & Hettterscheid, 1997 van der Ham <i>et al.</i> , 1998 Kite <i>et al.</i> , 1998

<b>Table 1. Continued.</b>						
<b>Subfamily/tribe</b>	<b>Genera</b>	<b>Bees</b>	<b>Beetles</b>	<b>Flies</b>	<b>Others</b>	<b>References</b>
Aroideae/ Aglaonemateae	<i>Aglaonema</i>			Drosophilidae		Yafuso & Okada, 1990 Sultana <i>et al.</i> , 2002
Aroideae/ Zantedeschieae	<i>Zantedeschia</i>		Scarabaeidae Scydmaenidae			Letty, 1973 Singh <i>et al.</i> , 1996
Aroideae/ Nephthytideae	<i>Anchomanes</i>	Trigone	Nitidulidae	Lonchaeidae		Knecht, 1983 Thompson & Rawlins, 1986 Beath, 1993 Knecht, 1983
Aroideae/ Nephthytideae	<i>Nephthytis</i>		Nitidulidae	Drosophilidae		
Aroideae/ Nephthytideae	<i>Pseudohydros- me</i>		Scaphidiidae Staphylinidae	Choridae Sphaeroceridae		Bogner, 181
Aroideae/ Culcasieae	<i>Cercestis</i>		Nitidulidae	Drosophilidae		Knecht, 1983 Beath, 1993
Aroideae/ Culcasieae	<i>Culcasia</i>		Nitidulidae	Drosophilidae		Knecht, 1983 Beath, 1993, 1998
Aroideae/ Colocasieae	<i>Alocasia</i>		Nitidulidae Scarabaeidae Staphylinidae	Drosophilidae Anthomyiidae Neurochaetidae		van der Pijl, 1933 Carson & Okada, 1982 Honda-Yafuso, 1983 Shaw & Cantrell, 1983 Okada & Yafuso, 1989 Vogel, 1990 Yafuso & Okada, 1990 Yafuso, 1993, 1994, 1999 Miyake & Yafuso, 2003
Aroideae/ Colocasieae	<i>Colocasia</i>			Drosophilidae		Cleghorn, 1913 Carson & Okada, 1982 Honda-Yafuso, 1983 Yafuso & Okada, 1990

Table 1. Continued.						
Subfamily/tribe	Genera	Bees	Beetles	Flies	Others	References
Aroideae/ Cryptocoryneae	<i>Cryptocoryne</i>			Centro- pogonidae Ephydriidae Phoridae		Petch, 1928 McCann, 1943 Vogel, 1990
Aroideae/ Peltandreae	<i>Peltandra</i>			Chloropidae Syrphidae		Goldberg, 1941 Patt <i>et al.</i> , 1995
Aroideae/ Arisamateae	<i>Arisaema</i>			Sciaridae Mycetophilidae Dolichopodidae Phoridae Keroplastidae	Thrips	Barnes, 1934 Pijl van der, 1953 Vogel, 1978, 1990 Rust, 1980 Bierzychudek, 1981, 1982, 1984 Menzel & Martens, 1995 Vogel & Martens, 2000
Aroideae/ Arisamateae	<i>Pinellia</i>			“fungus gnat” Cerato- pogonidae		Hubbard, 1895 Schmucker, 1925 Vogel in Jaeger, 1976 Vogel, 1990
Aroideae/ Arisareae	<i>Arisarum</i>			Mycetophilidae Sciaridae Psychodidae Chironomidae Drosophilidae		Knuth, 1909 Vogel, 1978 Koach & Galil, 1986 Herrera, 1988
Aroideae/ Ambrosineae	<i>Ambrosina</i>			“flies”	Mites?	Knuth, 1909 Killiam, 1929, 1933 da Silva, 1981
Aroideae/ Pistieae	<i>Pistia</i>		“Curculio- nids”?			
Aroideae/ Areae	<i>Arum</i>			Psychodidae Centro- pogonidae Ceratopogonidae		Arcangeli, 1886a, 1886b <sup>1</sup> Gaye, 1885 Church, 1908

Table 1. Continued.

Subfamily/tribe	Genera	Bees	Beetles	Flies	Others	References
				Sphaeroceridae		Knuth, 1909
				Sciaridae		Schmucker, 1925
				Simuliidae		Knoll, 1926, 1930
						Tonnoir, 1940
						Grensted, 1947
						Sowter, 1949
						Kullenberg, 1953
						Prime, 1954, 1960
						Lamb, 1956
						Dormer, 1960
						Braverman & Koach, 1982
						Koach, 1985
						Papp & Rohacek, 1987
						Withers, 1988
						Rohacek <i>et al.</i> , 1990
						Lack & Diaz, 1991
						Drummond & Hammond, 1991, 1993
						Méndez & Obeso, 1992
						Boyce, 1993
						Kite <i>et al.</i> , 1998
						Jezek, 2002
						Diaz & Kite, 2002
						Albre <i>et al.</i> , 2003
						Drummond & Boorman, 2003
						Koach & Galil, unpubl. data
						Gibernau <i>et al.</i> , unpubl. data



Table 1. Continued.

Subfamily/tribe	Genera	Bees	Beetles	Flies	Others	References
Aroideae/ Areae	<i>Biarum</i>		Scarabaeidae Staphylinidae	Flies? Sepsidae Empididae Drosophilidae		Koach, 1985
Aroideae/ Areae	<i>Dracunculus</i>		Staphylinidae Dermestidae Histeridae Sylphidae	Calliphoridae Muscidae Sarcophagidae		Arcangeli, 1886b, 1886c <sup>1</sup> Delpino, 1890a, 1890b Knuth, 1909 Schmucker, 1930 Malvesin-Fabre, 1945 Boyce, 1986 Seymour & Schultze-Motel, 1999
Aroideae/ Areae	<i>Eminium</i>		Scarabaeidae Staphylinidae	Sphaeroceridae Sepsidae Ortidae Muscidae Ulidiidae Heleomyzidae Ephydriidae Calliphoridae		Koach, 1985 Pap & Rohacek, 1987
Aroideae/ Areae	<i>Helicodiceros</i>					Schnetzler, 1879 Stensmyr <i>et al.</i> , 2002 Seymour <i>et al.</i> , 2004 Gibernau <i>et al.</i> , unpubl. data
Aroideae/ Areae	<i>Sauromatum</i>		Scarabaeidae Bruchidae	Sepsidae Muscidae Otitidae Sarcophagidae Calliphoridae		Dakwale & Bhatnagar, 1982, 1985

Table 1. Continued.						
Subfamily/tribe	Genera	Bees	Beetles	Flies	Others	References
Aroideae/ Areae	<i>Tberiopbonum</i>			Cerato- pogonidae		Dakwale & Bhatnagar, 1997
Aroideae/ Areae	<i>Typhonium</i>		Scarabaeidae Staphylinidae Nitidulidae Ptiliidae Scydmaenidae			Cleghorn, 1914 Banerji, 1947 van der Pijl, 1953 Monteith, 1973

<sup>1</sup> Arcangeli's papers were first published in 1883 but they were reprinted in 1886.

Third, in several cases only one or a small number of species of a given genus has been documented. Thus a generalization about the pollination of the whole genus from the reports now available becomes hazardous and may in fact hide the existence of a greater diversity in insect-aroid interactions.

The histogram (Fig. 1) represents the number of references available on pollinators for the aroid genera. As mentioned before, for most of the aroid genera (56), there are no records of the pollinators (i.e. the top left bar). Most of the documented genera (59%) are only documented by one, two or three references (13 with one reference, nine with two, five with three and so on). The genera actually named on the graph are those with the highest number of references about their pollinators. For example, three genera, *Xanthosoma*, *Dieffenbachia* and *Alocasia*, each have 10 references dealing with their visitors/pollinators. The genus *Arum* is the most documented with 31 known references.

**DISCUSSION**

Amazingly in spite of their "unique" and very constant inflorescence design, aroids have developed pollination relationship with a great diversity of insects: bees, beetles and flies (Bown, 2000). Even vertebrates, e.g. hummingbirds, have recently been mentioned (Kraemer & Schmitt, 1999).

**Inflorescence Evolutionary Trends**

Aroids have a characteristic inflorescence made up of a spadix and a spathe, and all the inflorescence morphologies observed in aroids can be seen as variations around this same theme (Bown, 2000). From a pollination point of view, there are two main inflorescence evolutions:

1) Evolution of unisexual flowers that has allowed the secondary development of sterile flowers and then floral function specialisation (barrier, odor emission, thermogenesis, food-reward, . . .). On the contrary, in species with bisexual flowers, all the flowers have the same functions and

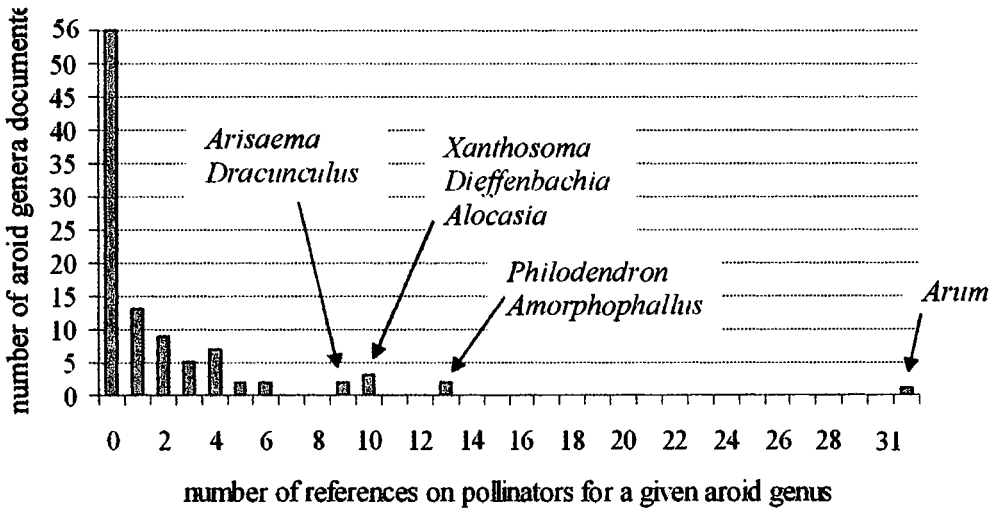


Fig. 1. Distribution of pollination studies through the Araceae

participate to all the “functions” from pollinator attraction to seed fertilisation through pollen dispersion.

2) Development of an enclosing spathe with secondary appearance of a constriction allowing the capture of insects in contact with the flowers. Consequently, the relationship with the pollinators has evolved from a “two-phases” interaction to a “one-phase” interaction (Meeuse, 1978). In species lacking a floral chamber, pollinators cannot “stay” or be captured near the flowers, they have to come and depart repeatedly. Thus one attraction phase is necessary during the female phase to attract pollen vectors and achieve ovule fertilisation. A second attraction phase is needed later during the male phase to ensure pollen collection and its dispersion.

In aroids with exposed inflorescences and long anthesis, the inflorescence “needs” to attract (e.g. with odour and heat production) the pollinators every day of anthesis. In species with a floral chamber, once pollinators have been attracted during the female stage, they are then kept within the floral chamber by trap mechanisms or rewards (shelter from light, food, sexual partners, ...) until the end of the anthesis (e.g. pollen release) hours or a few days later.

### Three Types of Interactions

As in all pollination systems, pollinators visit flowers looking for a resource. It can be an alimentary resource (nectar, pollen, floral parts, ...) or a “reproductive resource” (mating, laying site). Flowers in return have developed adaptations to transform this pollinator behaviour (e.g. resource seeking) into a “pollinating act”, and thus ensure their reproduction. One interesting point is that not a single aroid species is known to offer nectar as a reward (Schwerdtfeger *et al.*, 2002). Nectar, a high-energy supply, is not produced in Araceae and the stigmatic exudate (i.e. fluid) is supposedly a poor substitute from the energetic point of view. Stigmate exudates may have been the first type of nectar in flowering plants and occur in many primitive flowering plants (Lloyd & Wells, 1992).

From the flower-pollinator interaction point of view, three situations exist in Araceae.

1) “classical” flower—pollinator interaction. The inflorescence doesn’t play any role in the pollinator reproduction. The pollinator visits the inflorescence looking for a resource (stigmatic fluid, pollen) achieving thereby the pollination (e.g. *Symplocarpus*, *Calla*, some *Anthurium*).

2) The inflorescence becomes part of the reproductive cycle of the pollinator. Insects visit Araceae inflorescences not only for food rewards (stigmatic fluid, pollen or floral tissue) but also to meet sexual congeners, achieve copulations and sometimes lay their eggs (e.g. *Philodendron*, *Dieffenbachia*, *Peltandra*, *Colocasia*).

3) The inflorescence dupes the pollinators by mimicking the laying site of the pollinator (faeces, mushrooms, dead animal, . . .). Hence, the insects visit the inflorescence in order to complete their reproductive cycle. Through this deceptive attraction, the insects achieve pollination but without actually receiving any reward (e.g. *Arum*, *Helicodicerus*).

One can think of a fourth situation in which the pollinator dupes the flower, taking the resource but not achieving pollination. A well-known example is nectar thieving by bees or bumblebees and even birds. Such interaction exists in about 14 plant families although in some instances pollination is after all achieved (reviewed in Maloof & Inouye, 2000). Interestingly, flower exploitation by pollinators is not documented in Araceae, but this does not mean that it does not exist in this family. Further studies are needed to look for its existence or to argue why flower exploitation by pollinator has not evolved within Araceae.

### Observations in Natural/Introduced Populations

Observations and experiments in natural populations are very important since the results will inform us on the "normal" reproductive biology of a given species.

On the other hand, if observations and experiments on introduced populations appear artificial or secondary at first, such results can also be very interesting even if they need different kinds of interpretation. Knowing how an aroid is pollinated and reproduces outside its natural distribution range allows an understanding of how a species can adapt to new habitats with a different pollinating fauna. For example *Arum concinatum* growing in Crete is

visited by flies (Sphaeroceridae) and beetles (Staphylinidae) associated with faeces while in England it attracts the same (female) midges (*Psychoda*: Psychodidae and *Smittia*: Chironomidae) as the two local *Arum*: *A. maculatum* and *A. italicum* (Drummond & Hammond, 1993; Diaz & Kite, 2002). Some species may change their reproductive strategy, favouring vegetative over sexual reproduction when pollinators are lacking, and may potentially become invasive like *Zantedeschia* in some humid habitats of La Réunion.

In conclusion, I encourage you to have a look inside the inflorescence for insects next time you see an aroid in bloom and, for people who have observations and experimental results, to publish them in order to document a domain still poorly known for Araceae.

### ACKNOWLEDGMENTS

I wish to thank Derek Burch and Thomas Croat for constructive comments and corrections on the manuscript.

### LITERATURE CITED

- Albre J., A. Quilichini & M. Gibernau. 2003. Pollination ecology of *Arum italicum* (Araceae). *Bot. J. Linn. Soc.* 141:205–214.
- Arcangeli, G. 1886a. Osservazioni sulla fioritura dell' *Arum pictum* L. *Ric. Lav. Inst. Bot. Real. Univ. Pisa* 1:108–109.
- . 1886b. Osservazioni sull'impollinazione in alcune Aracee. *Ric. Lav. Inst. Bot. Real. Univ. Pisa* 1: 29–53.
- . 1886c. Sopra la fioritura del *Dracunculus crinitus* Schott. *Ric. Lav. Inst. Bot. Real. Univ. Pisa* 1:57–59.
- . 1890. Altre osservazioni sul *Dracunculus vulgaris* (L.) Schott e sul suo processo d'impollinazione. *Malpighia* 4: 254–261.
- Banerji, I. 1947. Life history of *Typhonium trilobatum* Schott. *Proc. Nat. Inst. Sci India* 13:207–230.
- Backer, C. A. 1913. Het slangenblad I, II. *Trop. Natuur* 2:165–168; 177–179.
- Barnes, E. 1934. Some observations on the genus *Arisaema* on the Nilgiri hills,

- South India. *J. Bombay Nat. Hist. Soc.* 37:629–639.
- Bawa, K. S. & J. H. Beach. 1981. Evolution of sexual systems in flowering plants. *Ann. Missouri Bot. Gard.* 68:254–274.
- Beach, J. H. 1982. Beetle pollination of *Cyclanthus bipartitus* (Cyclanthaceae). *Am. J. Bot.* 69:1074–1081.
- Beath, D. N. 1993. Biology of forest Araceae in Ghana. Unpub. PhD Thesis, University of Aberdeen, UK. 274pp.
- . 1996. Pollination of *Amorphophallus johnsonii* (Araceae) by carrion beetles (*Phaeochrous amplus*) in a Ghanaian rain forest. *J. Trop. Ecol.* 12:409–418.
- . 1998. Pollination ecology of the Araceae. Web page: [www.aroid.org/pollination/beath/index.html](http://www.aroid.org/pollination/beath/index.html).
- . 1999. Dynastine scarab beetle pollination in *Dieffenbachia longispatha* (Araceae) on Barro Colorado Island (Panama) compared with La Selva biological station (Costa Rica). *Aroideana* 22:63–71.
- Bierzychudek, P. 1981. Pollinator limitation of plant reproductive effort. *Am. Nat.* 117:838–840.
- . 1982. The demography of Jack-in-the-pulpit, a forest perennial that changes sex. *Ecol. Monogr.* 52:335–351.
- . 1984. Determinants of gender in Jack-in-the-pulpit: the influence of plant size and reproductive history. *Oecologia* 65:14–18.
- Bogner, J. 1976. *Amorphophallus maculatum* NE Br. *Palmengarten* 40:83–86.
- . 1981. *Pseudohydrosme gabunensis* Engl. *Aroideana* 4:31–37.
- Bown, D. 2000. *Aroids. Plants of the Arum Family*. Timber Press, Portland, Oregon, USA. 392 pp.
- Boyce, P. 1993. *The Genus Arum*. London, The Royal Botanic Gardens, Kew. 196 pp.
- Braverman, Y. & Y. Koach. 1982. Culicoides species found in the inflorescences of *Arum elongatum* in Israel. *Mosquito News* 42:516–517.
- Camazine, S. & K. J. Niklas. 1984. Aerobiology of *Symplocarpus foetidus*: interactions between the spathe and spadix. *Am. J. Bot.* 71:843–850.
- Carson, H. L. & T. Okada. 1980. Drosophilidae associated with flowers in Papua New Guinea. I. *Colocasia esculenta*. *Kontyû* 47:15–29.
- . 1982. Ecology and evolution of flower-breeding pomace flies of New Guinea (Diptera: Drosophilidae). *Entomol. Gener.* 8:13–16.
- Chuah, C. H., L. E. Ooi & S. H. Goh. 1996. New male fruit fly attractants from spadix of *Spathiphyllum cannaefolium* (Araceae). *Bioch. Syst. & Ecol.* 24:189–193.
- Church, A. H. 1908. *Types of Floral Mechanism: A Selection of Diagrams and Descriptions of Common Flowers Arranged as an Introduction to the Systematic Study of Angiosperms*. Clarendon Press, Oxford.
- Cleghorn, M. L. 1913. Notes on the pollination of *Colocasia antiquorum*. *J & Proc. Asiat. Soc. Bengal* 9:313–315.
- . 1914. A note on the floral mechanism of *Typhonium trilobatum*. *J. & Proc. Asiat. Soc. Bengal* 10:421–424.
- Croat, T. B. 1980. Flowering behavior of the neotropical genus *Anthurium* (Araceae). *Am. J. Bot.* 67:888–904.
- . 1981. A revision of *Syngonium* (Araceae). *Ann. Missouri Bot. Gard.* 68:565–651. See also the web page: [www.aroid.org/genera/syngonium/index.htm](http://www.aroid.org/genera/syngonium/index.htm)
- . 1997. A revision of *Philodendron* subgenus *Philodendron* (Araceae) for Mexico and Central America. *Ann. Missouri Bot. Gard.* 84:311–704.
- . 2000. History and current status of systematic research with Araceae. web page: [www.aroid.org/literature/croat/history/history-contents.html](http://www.aroid.org/literature/croat/history/history-contents.html).
- Dakwale, S. R. & S. Bhatnagar. 1982. *Sauromatum guttatum* (Schott.) a fly catcher and sampler aroid. *Curr. Sci.* 51:1076–1077.
- Dakwale, S. R. & S. Bhatnagar. 1985. Insect-trapping behaviour and diel periodicity in *Sauromatum guttatum* Schott (Araceae). *Curr. Sci.* 54:699–702.
- . 1997. Midge-trapping behaviour and floral biology of *Theriophonum crenatum* Blume. Rumph. (Araceae). *Curr. Sci.* 797:606–608.
- Delpino, F. 1890a. Sulla impollinazione dell'*Arum dracunculius*. *Malpighia* III: 385–395.
- . 1890b. Ancora sulla impollinazione del draconcolo. *Malpighia* IV:134–135.
- Diaz, A. & G. C. Kite. 2002. A comparison of the pollination ecology of *Arum maculatum* and *A. italicum* in England. *Watsonia* 24:171–181.

- Dorner, K. J. 1960. The truth about pollination in *Arum*. *New Phytol.* 59:298–301.
- Drummond, D. C. & P. M. Hammond. 1991. Insects visiting *Arum dioscoridis* Sm. and *A. orientale* M. Bieb. *Entomol. Month. Mag.* 127:151–156.
- . 1993. Insects visiting *Arum creticum* Boiss. & Heldr., *A. concinnum* Schott and *A. purpureospathum* Boyce. *Entomol. Month. Mag.* 129:245–251.
- Drummond, D. C. & J. Boorman. 2003. Further records of some *Arum* species and their insect visitors. *Entomol. Month. Mag.* 139:163–166.
- Fridlender, A. 1999. Observations sur la biologie de l'*Arum cylindraceum* Gasp. (Araceae) en Corse. *Acta Bot. Gall.* 146: 297–309.
- . 2000. Répartition, écologie et conservation de l'*Arum* mange-mouches *Helicodiceros muscivorus* (L. fil.) Engler (Araceae) en Corse. *Webbia* 55:7–35.
- García-Robledo, C., G. Kattan, C. Murcia & P. Quintero. 2003. Beetle pollination of *Xanthosoma* sp (Araceae) in an Andean cloud forest in Colombia. *J. Trop. Ecol.* (Accepted).
- Gaye, S. 1885. Some facts about Arums. *Middl. Nat.* 8:301–305.
- Gibernau, M. & D. Barabé. 2002. Pollination ecology of *Philodendron squamiferum* (Araceae). *Can. J. Bot.* 80:316–320.
- Gibernau, M., D. Barabé & D. Labat. 2000. Flowering and pollination of *Philodendron melinonii* (Araceae) in French Guiana. *Plant Biol.* 2:331–334.
- Gibernau, M., D. Barabé, P. Cerdan & A. Dejean. 1999. Beetle pollination of *Philodendron solimoense* (Araceae) in French Guiana. *Int. J. Plant Sci.* 160:1135–1143. see also the web page: [www/roid.org/pollination/gibernau/index.html](http://www/roid.org/pollination/gibernau/index.html)
- Gibernau, M., J. Albre, A. Dejean & D. Barabé. 2002. Seed predation in *Philodendron solimoense* (Araceae) by chalcid wasps (Hymenoptera). *Int. J. Plant Sci.* 163:1017–1023.
- Gibernau, M., D. Barabé, D. Labat, P. Cerdan & A. Dejean. 2003. Reproductive biology of *Montrichardia arborescens* (Araceae) in French Guiana. *J. Trop. Ecol.* 19:103–107.
- Goldberg, B. 1941. Life history of *Peltandra virginica*. *Bot. Gaz.* 102:641–662.
- Goldwasser, L. 2000. Scarab beetles, elephant ear (*Xanthosoma robustum*) and their associates, pp. 268–271 In N. M. Natkarni & N. T. Wheelwright (eds.), *Monteverde—Ecology & conservation of a tropical cloud forest*. Oxford University Press, Oxford.
- Gottsberger, G. & A. Amaral Jr. 1984. Pollination strategies in Brazilian *Philodendron* species. *Berich. Deustch. Bot. Ges.* 97:391–410.
- Gottsberger, G. & I. Silberbauer-Gottsberger. 1991. Olfactory and visual attraction of *Erioscelis emarginata* (Cyclocephalini, Dynastinae) to the inflorescences of *Philodendron selloum* (Araceae). *Biotropica* 23:23–28.
- Grayum, M. H. 1984. Palynology and phylogeny of the Araceae. Botany Ph.D. Dissertation, University of Massachusetts, Amherst.
- . 1986. Correlations between pollination biology and pollen morphology in the Araceae, with some implications for angiosperm evolution, pp. 313–327 In I. K. Ferguson & S. Blackmore (eds.), *Pollen and Spores: Form and Function*. Elsevier Press, London.
- . 1990. Evolution and phylogeny of the Araceae. *Ann. Missouri Bot. Gard.* 77:628–697.
- . 1996. Revision of *Philodendron* subgenus *Pteromischum* (Araceae) for Pacific and Caribbean tropical America. *Syst. Bot. Monogr.* 47:1–233.
- Grinstead, L. W. 1947. Diptera in the spathes of *Arum maculatum* L. *Entomol. Month. Mag.* 83:1–3.
- Grimaldi, D. & J. Jaenike. 1983. The diptera breeding on skunk cabbage, *Symplocarpus foetidus* (Araceae). *New York Entomol. Soc.* 91:83–89.
- Herrera, J. 1988. Reproduccion sexual y multiplicacion vegetativa en *Arisarum simorbinum* Durieu (Araceae). *Lagascalia* 15:25–41.
- Hesse, M. 1980. Entwicklungsgeschichte und ultrastruktur von pollenkitt and exine bei nahe verwandten entomophilen und anemophilen Angiospermsippen der Alismataceae, Liliaceae, Juncaceae, Cyperaceae, Poaceae und Araceae. *Plant Syst. Evol.* 134:229–267.
- Honda-Yafuso, M. 1983. Interspecific relationship between synhospitalic *Drosophila* species (Diptera, Drosophilidae) inhabiting *Alocasia odora* on Okinawa Is., Japan. *Kontyû* 51:520–527.

- Hubbard, H. G. 1895. Insect fertilization of an aroid plant. *Insect Life* 7:340–345.
- Jaeger, P. 1976. Les rapports mutuels entre fleurs et insectes, pp. 677–698 In P. P. Grassé (ed.), *Traité de Zoologie—Anatomie, Systématique, Biologie*, Tome VIII—Fascicule IV. Masson, Paris.
- Jezek, J. 2002. The first account of slovenian moth flies (Psychodidae, Diptera). *J. Nat. Mus., Nat. Hist. Ser.* 171:31–175.
- Killian, C. 1929. Développement et biologie de l'*Ambrosinia Bassii* L. *Bull. Soc. Hist. Nat. Afr. Nord* 20:257–278.
- . 1933. Développement, biologie et répartition de l'*Ambrosinia Bassii* L. *Bull. Soc. Hist. Nat. Afr. Nord* 24:259–294.
- Kite, G. C. & W. L. A. Hetterscheid. 1997. Inflorescence odours of *Amorphophallus* and *Pseudodracontium* (Araceae). *Phytochem.* 46:71–75.
- Kite, G. C., W. L. A. Hetterscheid, M. J. Lewis, P. C. Boyce, J. Ollerton, E. Cocklin, A. Diaz & M. S. J. Simmonds. 1998. Inflorescence odours and pollinators of *Arum* and *Amorphophallus*, pp. 295–315 In S. J. Owens & P. J. Rudall (eds.), *Reproductive Biology*. Royal Botanical Gardens, Kew.
- Knecht, M. 1983. Aracées de Côte d'Ivoire—Contribution à l'étude biosystématique des représentants d'Aracées de la Côte d'Ivoire. *Phanerogamarum Monographiae*—Tom. XVII. Cramer, Vaduz, 290p.
- Knoll, F. 1926. Die *Arum*-Blütenstände und ihre besucher (Insekten und Blumen IV). *Abh. Zool.-Botan. Ges. Wien* 12: 381–481.
- . 1930. Über Pollenkitt und Bestäubungsart. *Z. Bot.* 23:609–675.
- Knuth, P. 1909. *Handbook of Flower Pollination*. Oxford, Clarendon Press.
- Koach, J. 1985. Bio-ecological studies of flowering and pollination in Israeli Araceae. Unpub. Ph.D. Thesis, University of Tel-Aviv, Israel. In Hebrew (English abstract). 179p.
- Koach, J. & J. Galil. 1986. The breeding system of *Arisarum vulgare* Targ.—Tozz. *Isr. J. Bot.* 35:79–90.
- Klotz, L. H. 1992. On the biology of *Orontium aquaticum* L. (Araceae), golden club or floating Arum. *Aroideana* 15: 25–33.
- Kraemer, M. & U. Schmitt. 1999. Possible pollination by hummingbirds in *Anthurium sanguineum* Engl. (Araceae). *Pl. Syst. & Evol.* 217:333–335.
- Krause, K. 1908. *Aroideae—Calloideae.*, pp. 140–155 In A. Engler (ed.), *Das Pflanzenreich* 37(IV 23B).
- Kullenberg, B. 1953. Observationer över Arum-pollinerare i Libanons kustområde. *Svensk Bot. Tidskr.* 47:24–29.
- Lack, A. J. & A. Diaz. 1991. The pollination of *Arum maculatum* L.—a historical review and new observations. *Watsonia* 18:333–342.
- Lamb, A. 1956. An investigation of the efficiency of the pollination mechanism in lords-and-ladies. *Blundell's Sch. Sci. Soc. Mag.* 2:33–37.
- Letty, C. 1973. The genus *Zantedeschia*. *Bothalia* 11:5–26.
- Lewis, J. A., C. J. Moore, M. T. Fletcher, R. A. Drew & W. Kitching. 1988. Volatile compounds from the flowers of *Spathiphyllum cannaefolium*. *Phytochem.* 27: 2755–2757.
- Lloyd, D. G. & M. S. Wells. 1992. Reproductive biology of a primitive angiosperm, *Pseudowintera colorata* (Winteraceae), and the evolution of pollination systems in the Anthophyta. *Pl. Syst. Evol.* 181: 77–95.
- Madison, M. 1977. A revision of *Monstera* (Araceae). *Contr. Gray Herb.* 207:1–101.
- . 1979. Notes on some aroids along the Rio Negro, Brazil. *Aroideana* 2:67–77.
- . 1981. Notes on *Caladium* (Araceae) and its allies. *Selbyana* 5:342–377.
- Maloof, J. E. & D. W. Inouye. 2000. Are nectar robbers cheaters or mutualists? *Ecology* 81:2651–2661.
- Malvesin-Fabre, G. 1945. Remarques biologiques sur *Dracunculus vulgaris* Schott. *Proc-verb. Soc. Lin. Bord.* 93:128–130.
- Mayo, S. J., E. Widjaja & P. Gibbon. 1982. *Amorphophallus lambii*. *Curtis Bot. Mag.* 184:61–64.
- McCann, C. 1943. 'Light-windows' in certain flowers. *J. Bombay Nat. Hist. Soc.* 44: 182–185.
- Meeuse, B. J. D. 1978. The physiology of some sapromyophilous flowers, pp. 97–104 In A. J. Richards (ed.), *The pollination of flowers by insects*. Academic Press, London.
- Meeuse, B. J. D. & M. H. Hatch. 1960. Beetle pollination in *Dracunculus* and *Saurumatum* (Araceae). *Coleopt. Bull.* 14:70–74.

- Méndez, M. & J. R. Obeso. 1992. Influencia del osmoforo en la producción de infrutescencias en *Arum Italicum* Miller (Araceae). *An. J. Bot. Madrid* 50:229–237.
- Menzel, F. & J. Martens. 1995. Die Sciaridae (Diptera, Nematocera) des Nepal-Himalaya Teil I. Die Blütenbesuchenden Trauermücken an Aronstabgewächsen der Gattung *Arisaema* (Araceae Juss.). *Studia Dipt.* 2:97–129.
- Miyake, T. and M. Yafuso. 2003. Floral scents affect reproductive success in fly-pollinated *Alocasia odora* (Araceae). *Am. J. Bot.* 90:370–376.
- Momose, K., T. Yumoto, T. Nagamitsu, M. Kato, H. Nagamasu, S. Sakai, R. D. Harrison, T. Itioka, A. A. Hamid & T. Inoue. 1998. Pollination biology in a lowland dipterocarp forest in Sarawak, Malaysia. I. Characteristics of the plant-pollinator community in a lowland dipterocarp forest. *Am. J. Bot.* 85:1477–1501.
- Montalvo, A. M. & J. D. Ackerman. 1986. Relative pollinator effectiveness and evolution of floral traits in *Spathiphyllum friedrichsthali* (Araceae). *Am. J. Bot.* 73:1665–1676.
- Monteith, G. B. 1973. Entomological notes: dung beetles as pollinators of an *Arum* Lily. *Neus Bull. Entomol. Soc. Queensland.* 97:13.
- Moodie, G. E. E. 1976. Heat production and pollination in Araceae. *Can. J. Bot.* 54: 545–546.
- Mori, Y. & H. Okada. 2001. Reproduction biology and pollen flow of a rheophytic aroid, *Furtadoa sumatrensis* (Araceae) in the Malaysian wet tropics. *Plant Syst. & Evol.* 227:37–47.
- Moron, M. A. 1997. Notas sobre *Cyclocephala* Latreille (Coleoptera: Melolonthidae, Dynastinae) asociadas con *Xanthosoma* Schott (Araceae) en Chiapas, México. *G. Ital. Entomol.* 8:399–407.
- Okada, T. 1980. Synhospitalic evolution of the genus *Drosophilella* Duda (Diptera, rosophilidae), with description of a new species from Okinawa and Taiwan. *Kontyû* 48:218–225.
- Okada, T. & H. L. Carson. 1980. Drosophilidae associated with flowers in Papua New Guinea. I. *Alocasia* (Araceae). *Pacific Insects* 22:217–236.
- Okada, T. & M. Yafuso. 1989. The genus *Colocastomyia* Duda (Diptera, Drosophilidae) from Sulawesi. *Proc. Jap. Soc. Syst. Zool.* 39:48–55.
- Ollerton, J. & A. Diaz. 1999. Evidence for stabilising selection acting on flowering time in *Arum maculatum* (Araceae): the influence of phylogeny on adaptation. *Oecologia* 119:340–348.
- Papp, L. & J. Rohacek. 1987. The sphaeroceridae (Diptera) of Israel. *Isr. J. Entomol.* 21:77–109.
- Patt, J. M., J. C. French, C. Schal, J. Lech & T. G. Hartman. 1995. The pollination biology of Tuckahoe, *Peltandra virginica* (Araceae). *Am. J. Bot.* 82:1230–1240.
- Pellmyr, O. 1985. *Cyclocephala*: visitor and probable pollinator of *Caladium bicolor* (Araceae). *Acta Amazon.* 15:269–272.
- Pellmyr, O. & J. M. Patt. 1986. Function of olfactory and visual stimuli in pollination of *Lysichiton americanum* (Araceae) by a staphylinid beetle. *Madroño* 33:47–54.
- Petch, T. 1928. Notes on Cryptocoryne. *Ann. Roy. Bot. Gard., Peradeniya* XI:11–26.
- Prime, C. T. 1954. *Arum neglectum* (Townson.) Ridley. *J. Ecol.* 42:241–248.
- . 1960. *Lords and Ladies*. London, Collins.
- Ramirez, N. 1989. Biología de Polinización en una comunidad arbustiva tropical de la alta guayana venezolana. *Biotropica* 21:319–330.
- Ramirez, N. & Y. Brito. 1990. Reproductive biology of a tropical palm swamp community in the Venezuelan llanos. *Am. J. Bot.* 77:1260–1271.
- . 1992. Pollination biology in a palm swamp community in the Venezuelan central plains. *Bot. J. Linn. Soc.* 110: 277–302.
- Ramirez, N. & A. Seres. 1994. Plant reproduction biology of herbaceous monocots in a Venezuelan tropical cloud forest. *Plant Syst. & Evol.* 190:129–142.
- Ramirez, N., C. Gil, O. Hokche, A. Seres & Y. Brito. 1990. Biología floral de una comunidad arbustiva tropical en la guayana venezolana. *Ann. Missouri Bot. Gard.* 77:383–397.
- Ramirez, W. B. 1980. Informe científico. *Brenesia* 18:367–368.
- Ramirez, W. B. & P. L. D. Gomez. 1978. Production of nectar and gums by flowers of *Monstera deliciosa* (Araceae) and of some species of *Clusia* (Guttiferae) collected by New World *Trigona* bees. *Brenesia* 14–15:407–412.
- Rohacek, J., I. Beck-Haug & K. Dobat. 1990. Sphaeroceridae associated with flowering



- Arum maculatum* (Araceae) in the vicinity of Tübingen, SW-Germany. *Senckenbergiana Biol.* 71:259–268.
- Rust, R. W. 1980. Pollen movement and reproduction in *Arisaema triphyllum*. *Bull. Torrey Bot. Club* 107:539–542.
- Schwerdtfeger, M., G. Gerlach & R. Kaiser. 2002. Anthecology in the Neotropical genus *Anthurium* (Araceae): a preliminary report. *Selbyana* 23:258–267.
- Schmucker, T. 1925. Beiträge zur Biologie und Physiologie von *Arum maculatum*. *Flora* 118/119:460–475.
- . 1930. *Dracunculus creticus*, die größtblütige europäische Pflanze und ihre Bestäubung. *Planta* 9:739–747.
- Schnetzler, B. 1879. Quelques observations sur le rôle des insectes pendant la floraison de l'*Arum crinitum*. *Ait. Compt. Rend. Hebd. Seances Acad. Sci.* 89:508–510.
- Schrottky, C. 1910. Die Befruchtung von Philodendron und Caladium durch einen Käfer (*Erioscelis emarginata*). *Zeitschr. Wissensch. Insektenbiol.* 6:67–68
- Seres, A. & N. Ramirez. 1995. Biología floral y polinización de algunas monocotiledoneas de un bosque nublado venezolano. *Ann. Missouri Bot. Gard.* 82:61–81.
- Seymour, R. S. & P. Schultze-Motel. 1999. Respiration, temperature regulation and energetics of thermogenic inflorescences of the dragon lily *Dracunculus vulgaris* (Araceae). *Proc. Roy. Soc. Lond., Series B* 266:1975–1983.
- Seymour R. S., Gibernau M. & Ito K. 2004. Thermogenesis and respiration of inflorescences of the dead horse lily *Helicodiceros muscivorus*, a pseudo-thermoregulatory aroid associated with fly pollination. *Funct. Ecol.* (Accepted).
- Shaw, D. E. 1997. *Gymnostachys anceps* R. Br.: fruit, germination, and a discussion of the possible means of dispersal. *Aroideana* 20:71–78.
- Shaw, D. E. & B. K. Cantrell. 1983. A study of the pollination of *Alocasia macrorrhiza* (L.) G. Don (Araceae) in southeast Queensland. *Proc. Linn. Soc. N.S.W.* 106:323–335.
- Shaw, D. E., L. H. Bird and L. I. Forsberg. 1997. *Gymnostachys anceps* R. Br.: Australian range and habitat in Southeastern Queensland. *Aroideana* 20:64–70.
- Silva da, C. J. 1981. Observações sobre o biologia reproductiva de *Pistia stratiotes* L. (Araceae). *Acta Amazon.* 11:487–504.
- Singh, Y., A. E. v. Wyk & H. Baijnath. 1996. Floral biology of *Zantedeschia aethiopica* (L.) Spreng. (Araceae). *S. Afr. J. Bot.* 62:146–150.
- Sivadasan, M. & T. Sabu. 1989. Beetle-pollination, cantharophily, in *Amorphophallus bobenackeri* (Araceae). *Aroideana* 12:32–37.
- Sowter, F. A. 1949. *Arum maculatum* L. *J. Ecol.* 37:207–219.
- Stensmyr, M. C., I. Urru, I. Collu, M. Celander, B. S. Hansson & A.-M. Angioy. 2002. Rotting smell of dead-horse arum florets. *Nature* 420:625–626.
- Stransky, K. & I. Valterova. 1999. Release of volatiles during the flowering period of *Hydrosme rivieri* (Araceae). *Phytochem.* 52:1387–1390.
- Sultana, F., M. J. Toda, M. Yafuso, M. B. Lakim, M. B. Mohamed & N. M. Cuong. 2002. A new species-group of the genus *Colocasiomyia* de Meijere (Diptera: Drosophilidae), with descriptions of two new species from Eastern Malaysia and Vietnam. *Entomol. Sci.* 5:305–315.
- Tanaka, H. 1998. Biological study on the pollination of *Lysichiton camtschatcense* (Araceae). *J. Jap. Bot.* 73:35–41.
- Thien, L. B., H. Azuma & S. Kawano. 2000. New perspectives on the pollination biology of basal angiosperms. *Int. J. Plant Sci.* 161:S225–S235.
- Thompson, S. E. & J. E. Rawlins. 1986. Floral ecology of *Anchomanes difformis* (Araceae). *Amer. J. Bot.* 73:791.
- Tonnoir, A. L. 1940. A synopsis of the British psychodidae (Dipt.) with descriptions of new species. *Trans. Soc. Brit. Entomol.* 7:21–64.
- Trelease, W. 1879. On the fertilisation of *Symplocarpus foetidus*. *Am. Nat.* 13: 580–581.
- Tsacas, L. & M.-T. Chassagnard. 1992. Les relations *Araceae-Drosophilidae*. *Drosophila Aracea* une espèce anthophile associée à l'aracée *Xanthosoma robustum* au Mexique (Diptera: Drosophilidae). *Ann. Soc. Entomol. Franç.* 28: 421–439.
- Uemera, S., K. Ohkawara, G. Kudo, N. Wada & S. Higashi. 1993. Heat-production and cross-pollination of the Asian skunk cabbage *Symplocarpus renifolius* (Araceae). *Am. J. Bot.* 80:635–640.
- Valerio, C. E. 1984. Insect visitors to the in-

- florescence of the aroid *Dieffenbachia oerstedii* (Araceae) in Costa Rica. *Brenesia* 22:139–148.
- . 1988. Notes on phenology and pollination of *Xanthosoma wendlandii*. *Rev. Biol. Trop.* 36:55–61.
- Valerio, C. E. & E. Villalobos. 1980. Polinización y eficiencia reproductiva en *Anthurium scandens* (Araceae). *Brenesia* 18:137–146.
- van der Ham, R. W. J. M., W. L. A. Hetterscheldt & B. J. van Heuven. 1998. Notes on the genus *Amorphophallus* (Araceae)—8 Pollen morphology of *Amorphophallus* and *Pseudodracontium*. *Rev. Paleobot. Palynol.* 103:95–142.
- van der Pijl, L. 1933. Welriekende vliegenvloemen bij *Alocasia pubera* Schott. *Trop. Natuur* 22:210–214.
- . 1937. Biological and physiological observations on the inflorescence of *Amorphophallus*. *Rec. Trav. Bot. Neerl.* 34:157–167.
- . 1953. On the flower biology of some plants from Java. *Ann. Bogor.* 1:77–99.
- Vogel, S. 1978. Pilzmückenblumen als Pilznumeten. *Flora* 167:329–398.
- . 1990. *The role of scent glands in pollination. On the Structure and Function of Osmophores*. Smithsonian Institution Libraries & National Science Foundation, Washington, S. Renner (translation). 203pp.
- Vogel, S. & J. Martens. 2000. A survey of the function of the lethal kettle traps of *Arisaema* (Araceae), with records of pollinating fungus gnats from Nepal. *Bot. J. Linn. Soc.* 133:61–100.
- Wada, N. & S. Uemura. 2000. Size-dependent flowering behavior and heat production of a sequential hermaphrodite, *Symplocarpus renifolius* (Araceae). *Am. J. Bot.* 87:1489–1494.
- Weryszko-Chmielewska, E. & M. Stpiczynska. 1995. Osmophores of *Amorphophallus rivieri* Durieu (Araceae). *Acta Soc. Bot. Pol.* 64:121–129.
- Williams, N. H. & R. L. Dressler. 1976. Euglossine pollination of *Spathiphyllum* (Araceae). *Selbyana* 1:349–356.
- Willson, M. F. & P. E. Hennon. 1997. The natural history of western skunk cabbage (*Lysichiton americanum*) in southeast Alaska. *Can. J. Bot.* 75:1022–1025.
- Withers, P. 1988. Revisionary notes on british species of *Psychoda* Latreille (Diptera, Psychodidae) including new synonyms and a species new to science. *Br. J. Ent. Nat. Hist.* 1:69–76.
- Yafuso, M. 1993. Thermogenesis of *Alocasia odora* (Araceae) and the role of *Colocasiomyia* flies (Diptera: Drosophilidae) as cross-pollinators. *Environ. Entomol.* 22:601–606.
- . 1994. Life history traits related to resource partitioning between synhospitalic species of *Colocasiomyia* (Diptera, Drosophilidae) breeding in inflorescences of *Alocasia odora* (Araceae). *Ecol. Entomol.* 19:65–73.
- . 1999. Larval performance and niche separation between two synhospitalic species of *Colocasiomyia* (Diptera, Drosophilidae). *Mem. Fac. Sci. Kyoto Univ. (Ser. Biol.)* 16:119–126.
- Yafuso, M. & T. Okada. 1990. Complicated routes of the synhospitalic pairs of the genus *Colocasiomyia* in Java, with descriptions of two new species (Diptera, Drosophilidae). *Esakia* 1:137–150.
- Yafuso, M., F. Sultana, T. Sasaki & M. J. Toda. 2000. A new species of *Colocasiomyia* de Meijere (Diptera, Drosophilidae) from North Sulawesi, Indonesia. *Entomol. Sci.* 3:115–119.
- Yong, H. S. 1993. Flowers of *Spathiphyllum cannaefolium* (Araceae): a male fruit-fly attractant of the methyl eugenol type. *Nat. Malays.* 18:61–63.
- Young, H. J. 1986. Beetle pollination of *Dieffenbachia longispatha* (Araceae). *Am. J. Bot.* 73:931–944.
- . 1988a. Differential importance of beetles species pollinating *Dieffenbachia longispatha* (Araceae). *Ecology* 69:832–844.
- . 1988b. Neighborhood size in a beetle pollinated tropical aroid: effects of low density and asynchronous flowering. *Oecologia* 76:461–466.
- . 1990. Pollination and reproductive biology of an understory Neotropical aroid, pp. 151–164 In K. S. Bawa & M. Hadley, *Reproductive ecology of tropical forest plants*. UNESCO, Man and the Biosphere series. Paris.